

INSTRUCTION MANUAL

SUPER 30 AUTO EJECT

AUTOMATIC SHORE LINE DISCONNECT



4 PIN, 30 AMP

MODEL # 091-73-430-120-XX

120 VOLT, 30 AMP

1 YEAR WARRANTY



KUSSMAUL ELECTRONICS CO., INC.
170 CHERRY AVE., WEST SAYVILLE, N.Y. 11796

TEL: in NY 631-567-0314

TOLL FREE: 800-346-0857

FAX: 631-567-5826

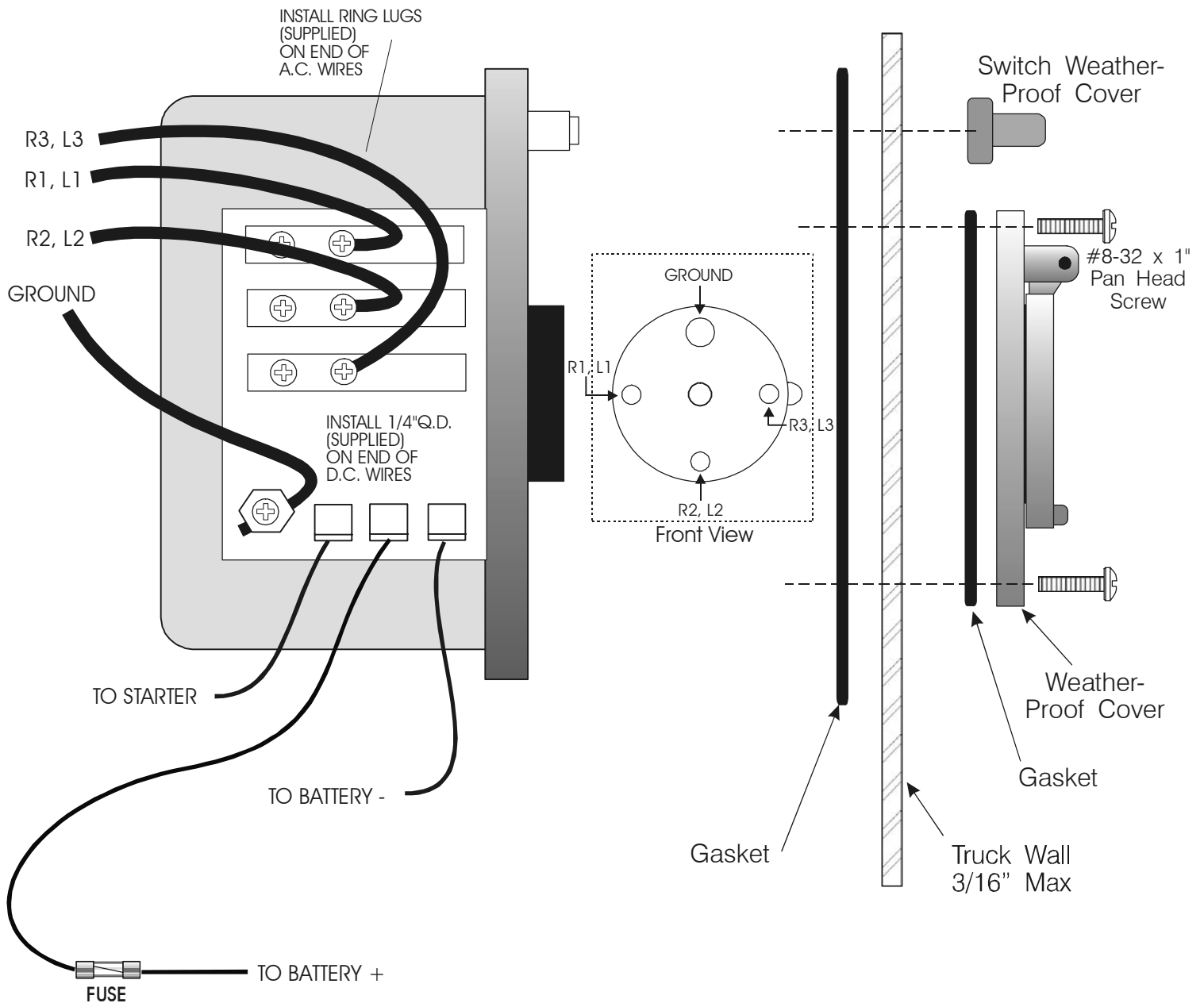
INSTALLATION INSTRUCTIONS

1. Locate a convenient place on the vehicle to mount the AUTO EJECT. A minimum clear-ance of 4 1/2 inches behind the mounting panel is required.
2. Place the template in position and center punch in 7 places.
- 3a. Drill 1 keyway hole, 3/8" diameter. **IMPORTANT THIS HOLE MUST BE DRILLED FIRST.**
- 3b. Drill 4 mounting holes, 3/16" diameter, 1 switch hole, 15/32 diameter and 1 hole, 2 1/4" diameter. Be certain that all the holes are precisely located to ensure that no binding occurs when the receptacle is moved in and out.
4. Remove the 4 #6-32 screws from the terminal side cover. The terminal cover must be drilled to accommodate the strain reliefs or conduit fittings. No holes have been provided so that the installer has complete freedom as to their location. Two inputs are suggested, one for the A.C. power wiring and the other for the D.C. control wires.
5. After wiring reinstall the terminal cover with the gasket and the 4 screws previously re-moved.
6. Install the large rubber gasket over the AUTO EJECT and mount on the vehicle utilizing the weatherproof cover, cover gasket and four #8-32 screws provided.
7. Install the rubber boot on the pushbutton switch.
8. Wire the A.C. leads to the appropriate loads in the vehicle and the D.C. wires as indicated in the diagram. Note that the Auto Eject requires a continuous supply of battery voltage and ground in addition to the connection to the starter. No power is drawn from the battery circuit unless the Auto Eject is operated.

TEST AND OPERATION

The Super 30 Auto Eject disconnects the shoreline by retracting its male pins and housing into the vehicle. To install the shore line, momentarily depress the pushbutton switch. This will partially extend the male assembly. At this point the interrupter switch has not closed and the power cannot flow into the vehicle. Open the end of the shore line connector and insert onto the male pins of the AUTO EJECT. Now depress the pushbutton a second time and hold untill the connector is fully extended. This will close the interrupter switch and power is now applied to the vehicle's A.C. loads.

SUPER 30 AUTO EJECT



5 AMP FUSE FOR 12 VOLT BATTERY
 3 AMP FUSE FOR 24 VOLT BATTERY
 IMPORTANT A FUSE MUST BE INSTALLED
 OR YOU WILL VOID THE WARRANTY.

Wiring Diagram SUPER 30 AUTO EJECT

NOTES AND CAUTIONS

NOTE

Do not permit the shore line to drop to the floor when it is ejected. Keep from falling by utilizing a bungee cord restraint, cord reel or some other device. Dropping the connector may result in damage or breakage. Kussmaul Electronics does not warranty the IEC 309 connector.

ABOUT CONNECTORS

The Super 30 Auto Eject utilizes an IEC 309 mating connector. We suggest that you utilize the connector supplied. When replacing with another connector, test carefully that the new connector will eject properly.

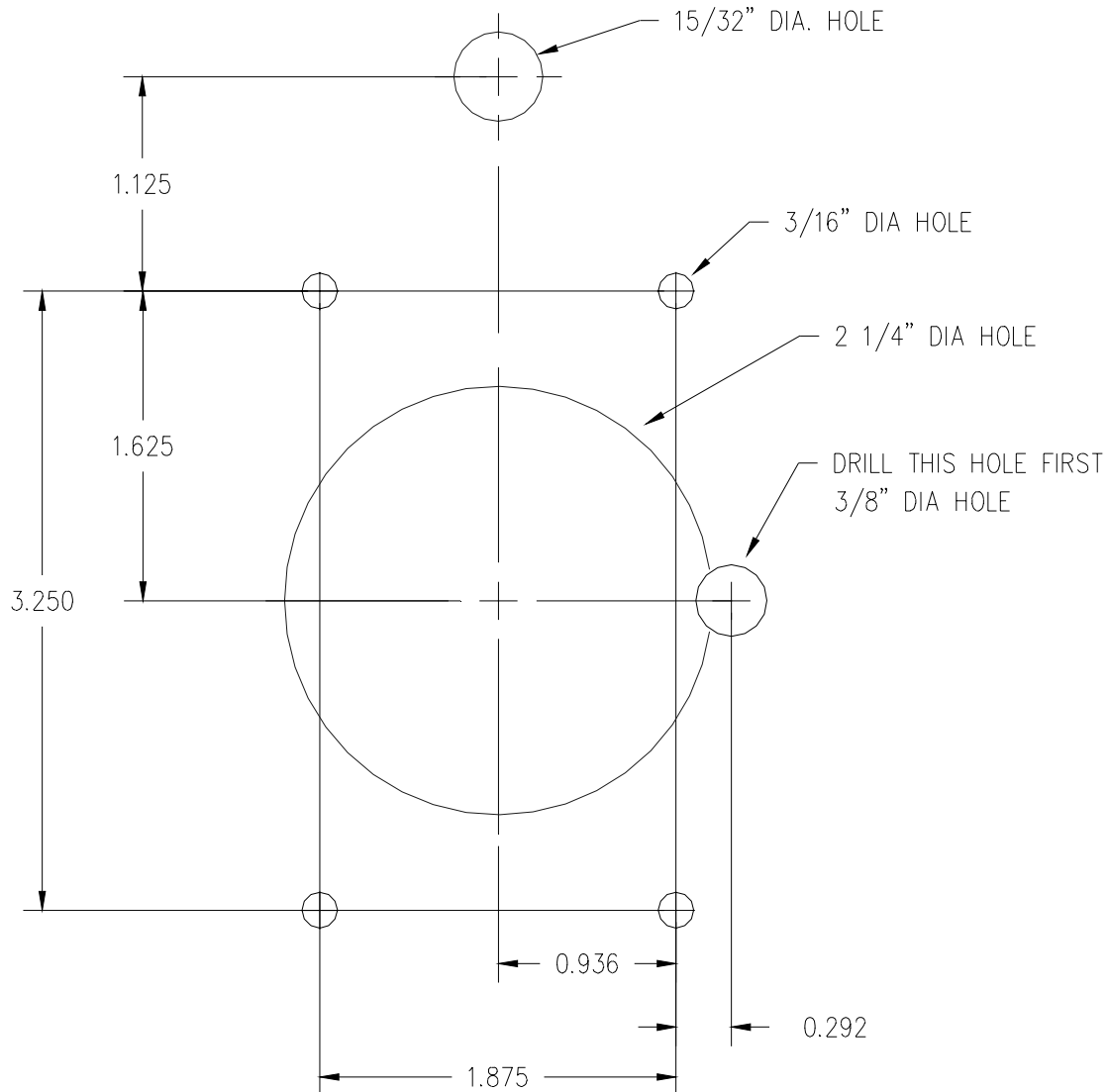
IMPORTANT

YOU MUST INSTALL A FUSE BETWEEN THE BATTERY + TERMINAL ON THE SUPER 30 AUTO EJECT AND THE BATTERY. FAILURE TO DO THIS WILL VOID THE WARRANTY.

CAUTION

THE EXTEND PUSHBUTTON SWITCH MUST BE PUSHED ONLY MOMENTARILY TO EXTEND THE AUTO EJECT TO THE FIRST POSITION TO RECEIVE THE SHORELINE. IF THE PUSH BUTTON IS HELD DOWN, THE AUTO EJECT WILL EXTEND FULLY AND DEFEAT THE INTERRUPTER SWITCH.

HOLE TEMPLATE



1 YEAR WARRANTY

All Super 30 Auto Ejects manufactured by Kussmaul Electronics Company Inc. are warranted to be free of defects of material or workmanship. Liability is limited to repairing or replacing at our factory, without charge, any material or defects which become apparent in normal use within 1 year from the date the equipment was shipped. Equipment is to be returned, shipping charges prepaid and will be returned, after repair, shipping charges paid.

This warranty does not include normal wear and tear, pitting of the electrical contacts, malfunction due to contamination of the mechanism, or any cracking breakage or damage to the IEC 309 connector.

Kussmaul Electronics Company, Inc. shall have no liability for damages of any kind to associated equipment arising from the installation and /or use of the Kussmaul Electronics Company, Inc. products. The purchaser, by the acceptance of the equipment, assumes all liability for any damages which may result from its installation, use or misuse, by the purchaser, his or its employees or others.